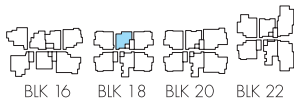
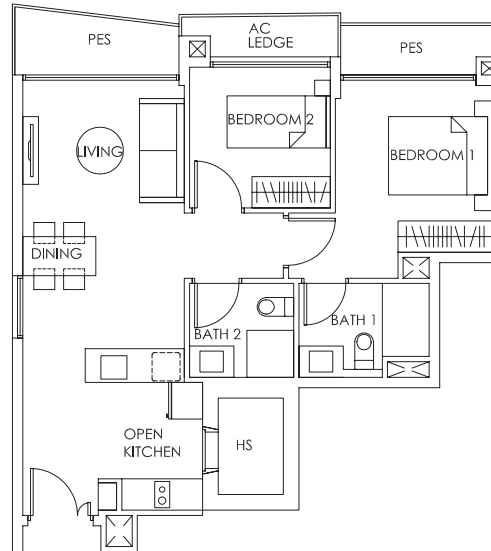


2-BEDROOM APARTMENT

Type B4c (P)

75 sq m

#04-13



BLK 16 BLK 18 BLK 20 BLK 22

BLK 30 BLK 28 BLK 26 BLK 24



The plans are subject to change as may be required or approved by the relevant authorities. These are not drawn to scale and are for the purpose of visual presentation of the different layouts that are available. Areas are estimates only and are subject to final survey.